

malamegi
INTERIOR DESIGN COMPLEMENTS

Malamegi è lieta di presentare la nuova collezione "Ling-Li Wang".

L'artista Taiwanese ci presenta 11 disegni tra i più curiosi della sua produzione. Luoghi fantastici e fiabeschi, sogni e personaggi che prendono vita in mondi rigorosamente in bianco e nero. Ci possiamo letteralmente perdere dentro i racconti di Ling.Li Wang, per tornare bambini e perdere completamente il contatto con la nostra solita realtà. "La creazione è il modo in cui parlo con me stessa. Creo, quindi cresco."

Malamegi is delighted to present the new collection: "Ling-Li Wang".

The Taiwanese artist presents us 11 of the most curious designs from her production. Fantastic places and fairy tales, dreams and characters taken life on their own in strictly black and white worlds. We can literally get lost in the stories by Ling.Li Wang, to return to childhood and lose completely contact with our usual reality. "Creation is the way I talk to myself. I create, then I grow."

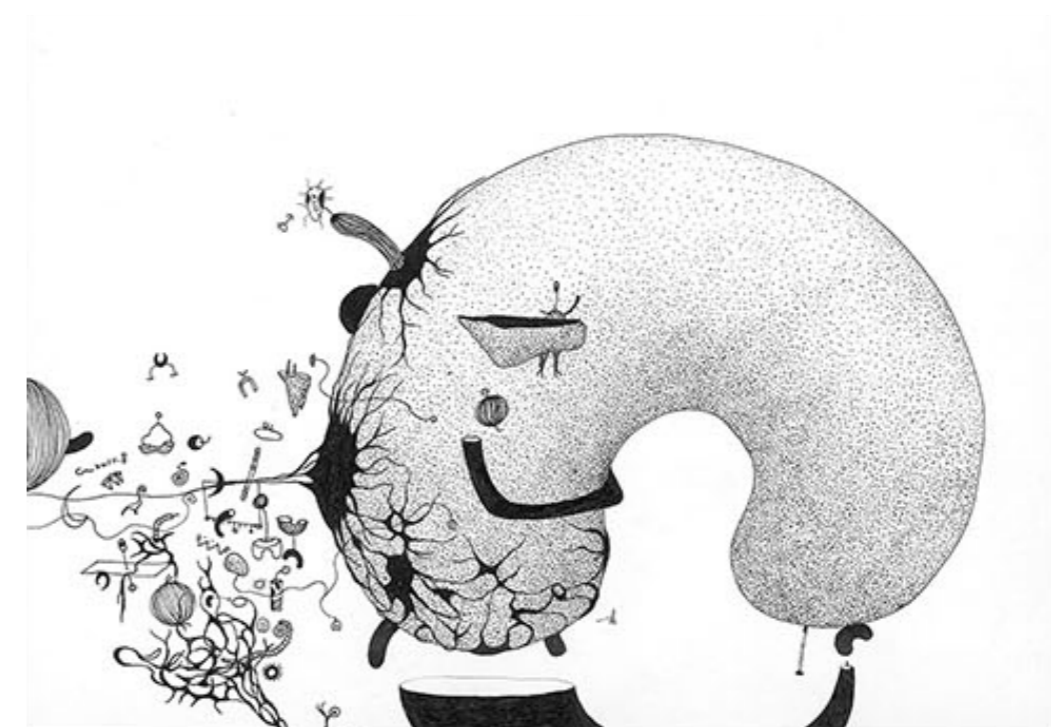


#1 // FAIRYLAND SERIES

57,0 x 40,0 cm

Print on cotton

Limited edition 1/10





#2 // FAIRYLAND SERIES

57,0 x 40,0 cm

Print on cotton

Limited edition 1/10





LING-LI WANG

collection

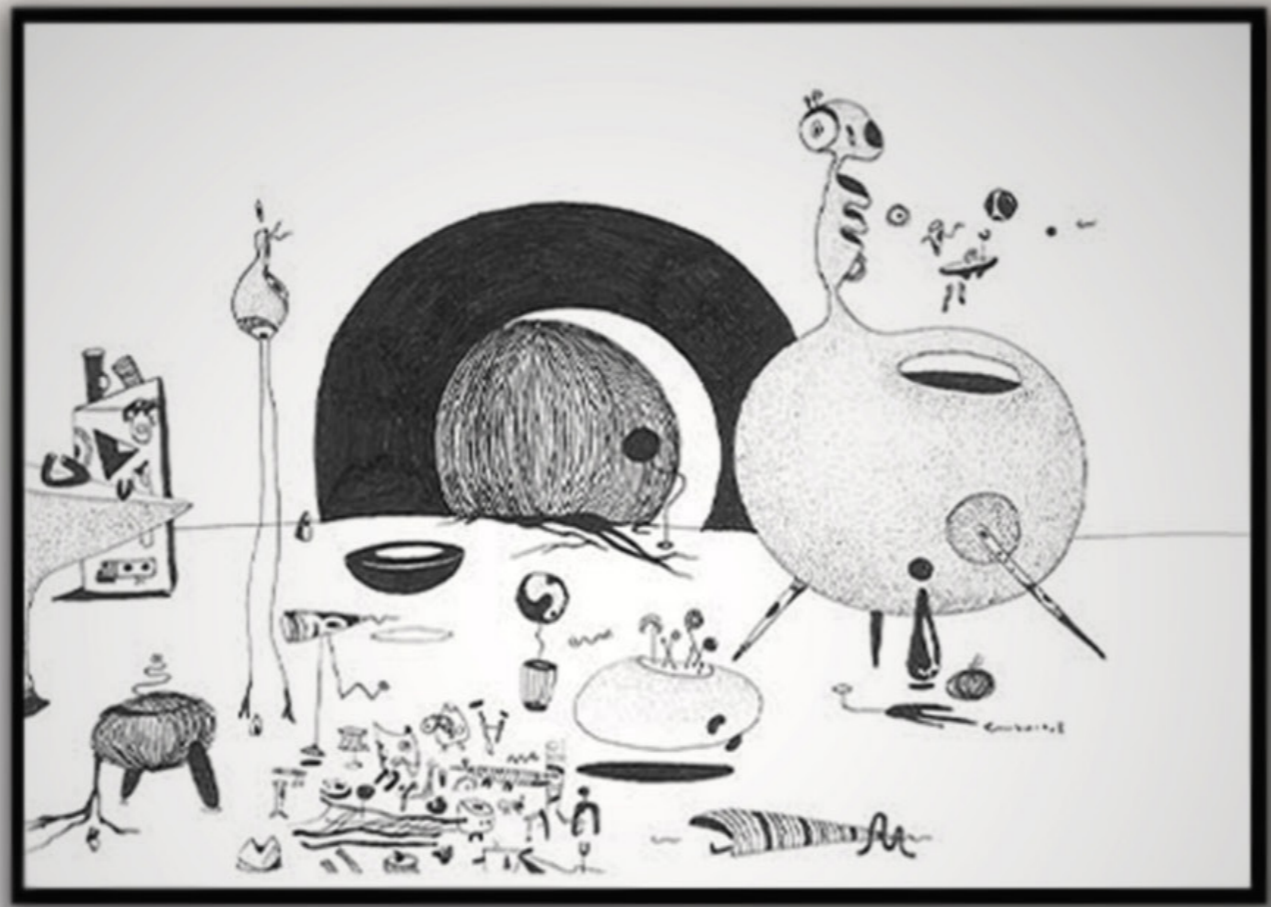
#3 // FAIRYLAND SERIES

77,0 x 54,0 cm

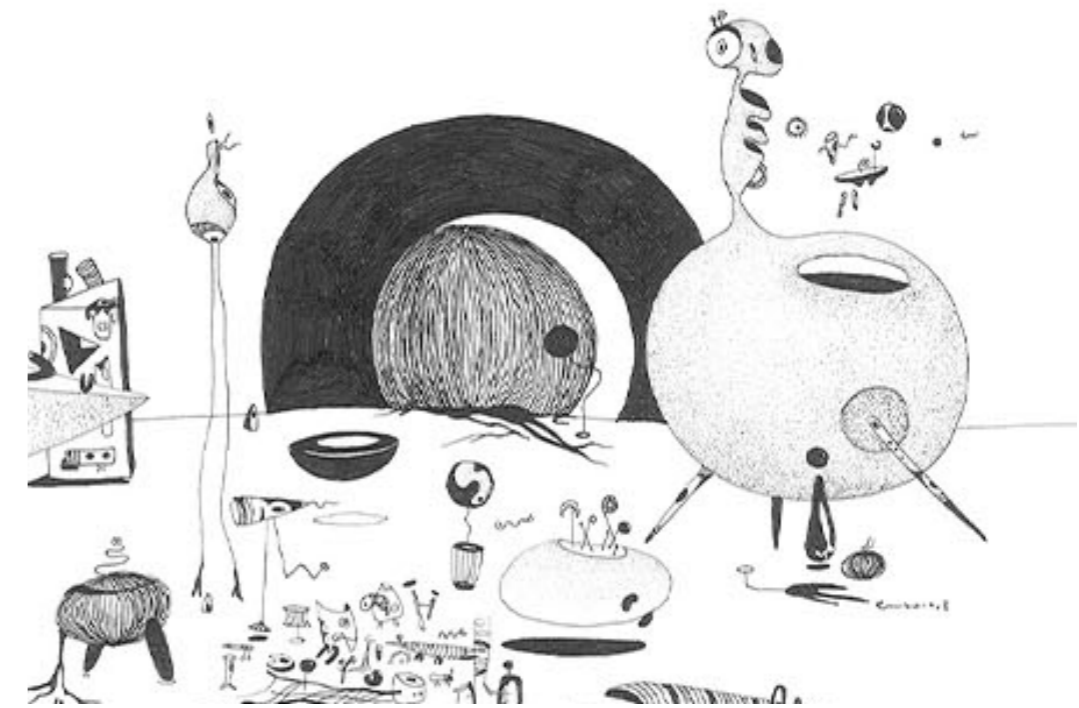
Print on cotton

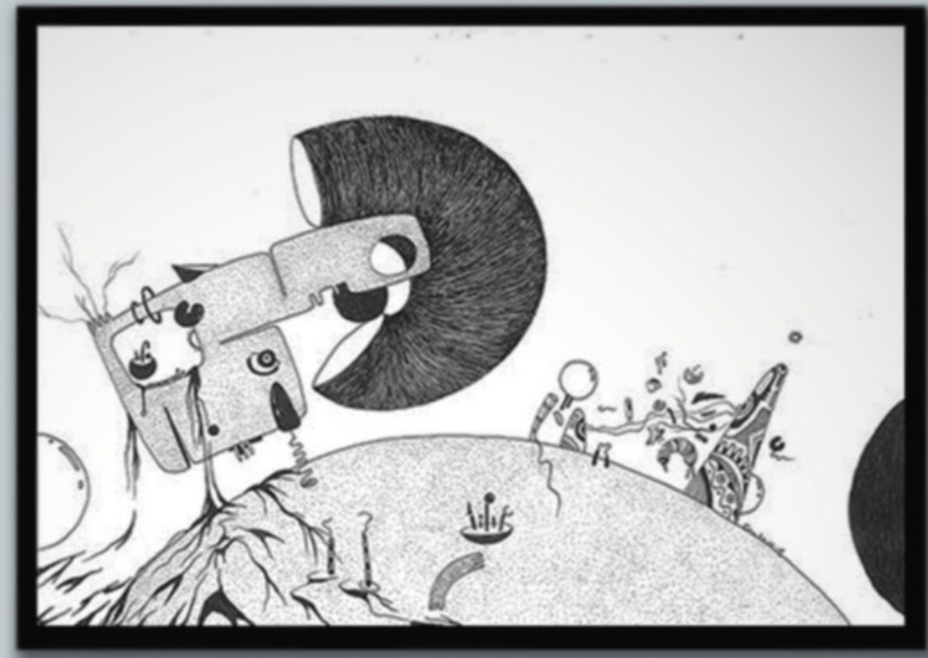
Limited edition 1/10



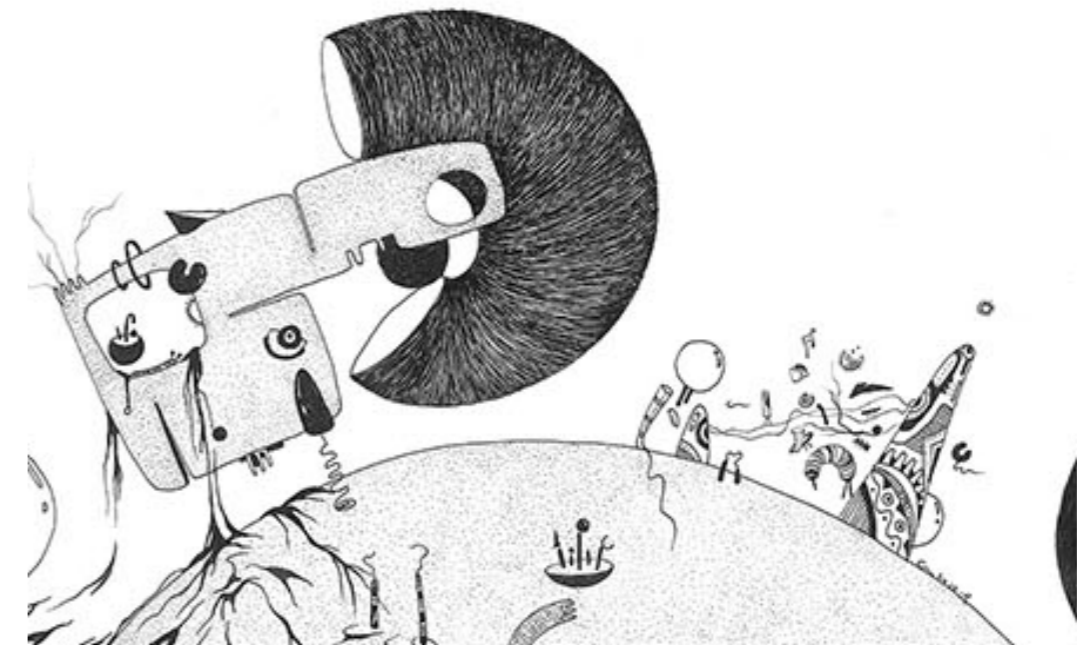


#1 // EGO SERIES
57,0 x 40,0 cm
Print on cotton
Limited edition 1/10





#2 // EGO SERIES
44,0 x 31,0 cm
Print on cotton
Limited edition 1/10





LING-LI WANG

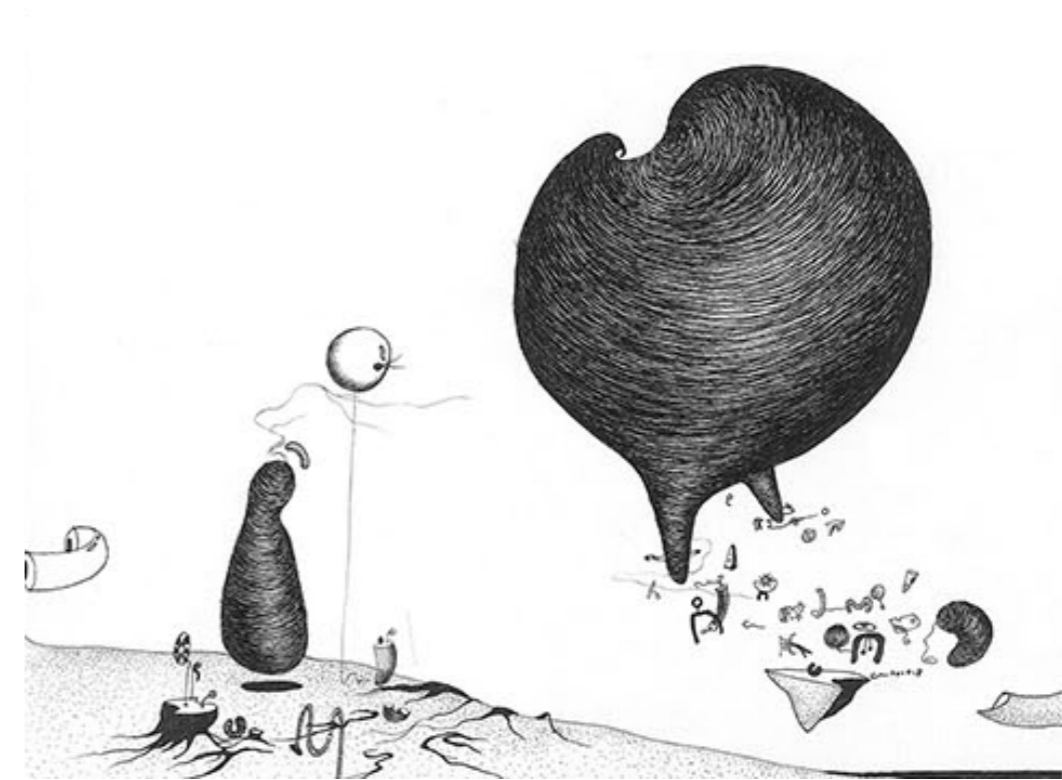
collection

#3 // EGO SERIES
77,0 x 54,0 cm
Print on cotton
Limited edition 1/10





#4 // EGO SERIES
44,0 x 31,0 cm
Print on cotton
Limited edition 1/10





LING-LI WANG

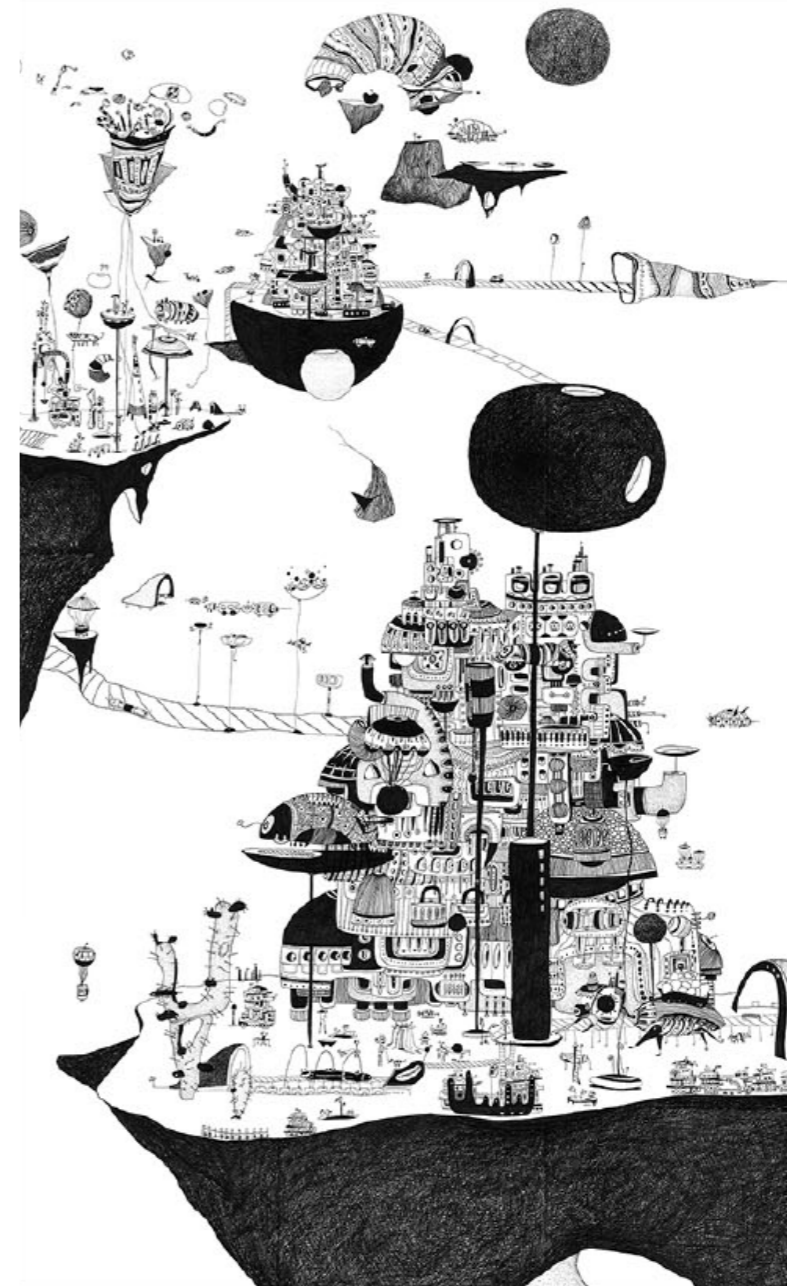
collection

THERE IS A CASTLE ON A CLOUD

105,4 x 65,1 cm

Print on cotton

Limited edition 1/10



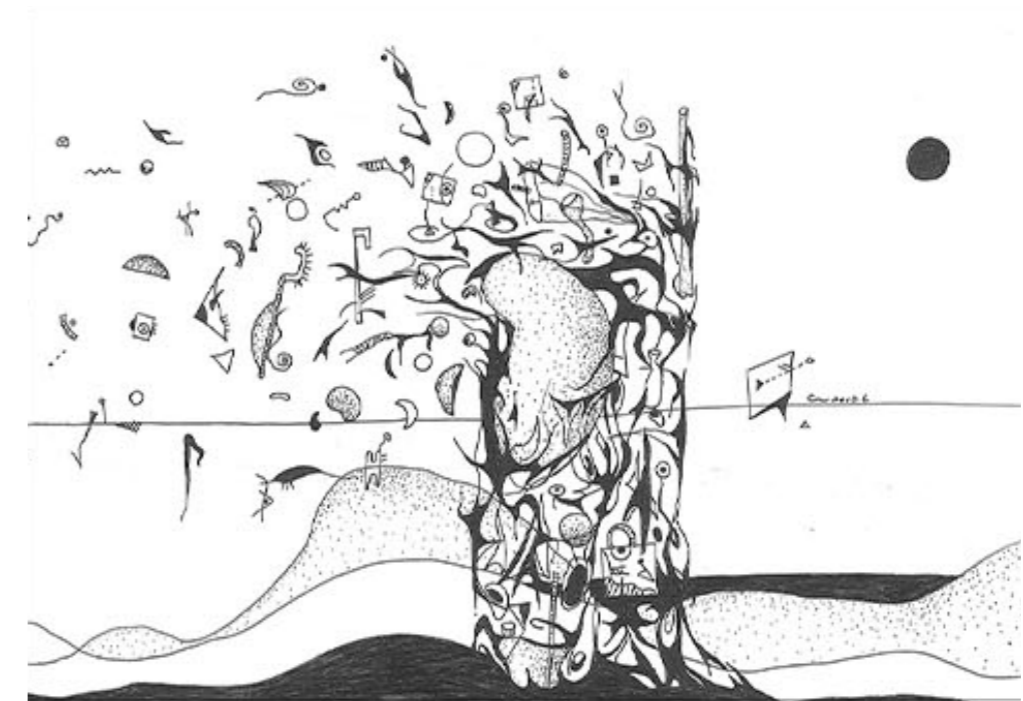


#1 // COLLAPSE SERIES

77,0 x 54,0 cm

Print on cotton

Limited edition 1/10





LING-LI WANG

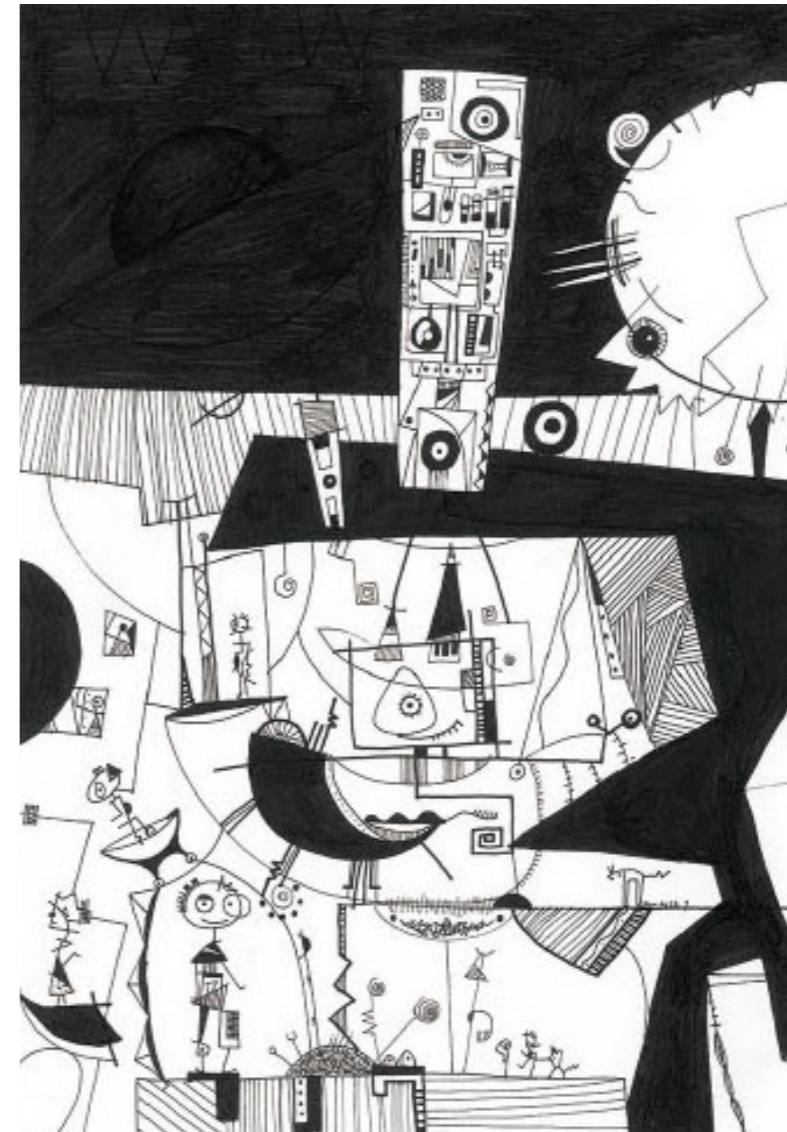
collection

#1 // DRAWING PAD SERIES

105,4 x 65,1 cm

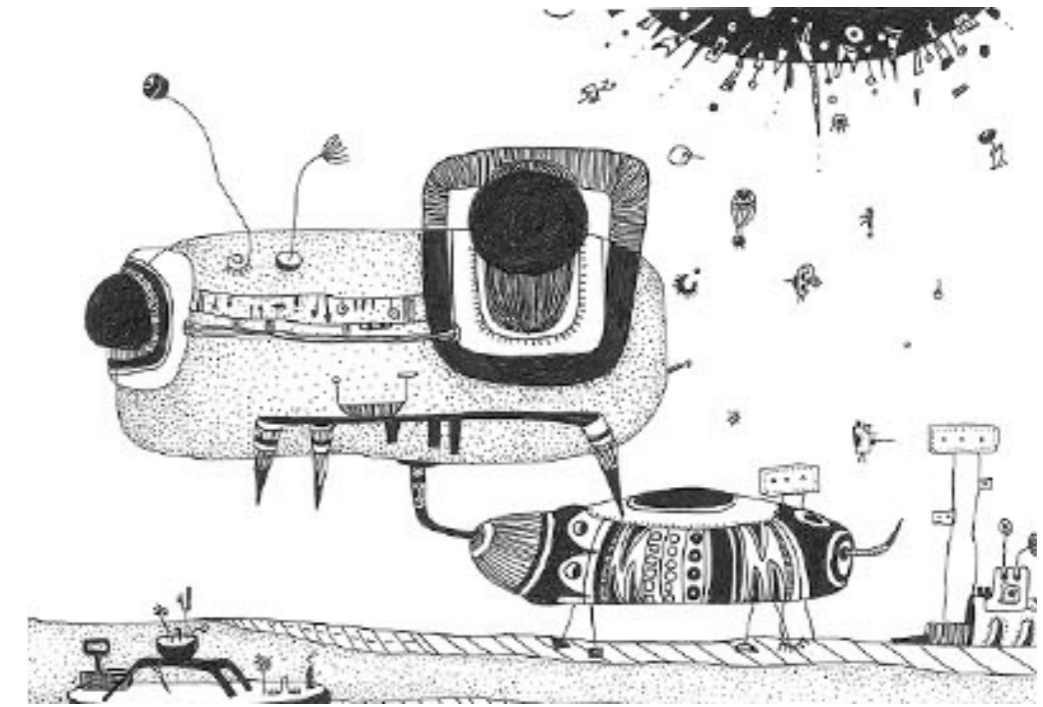
Print on cotton

Limited edition 1/10





#1 // TOWN SERIES
44,0 x 31,0 cm
Print on cotton
Limited edition 1/10



LING-LI WANG

collection



I am a non-traditional artist who create with ballpoint pens, drawing pads and a lot of passion.

I started to play with drawing tools about twenty years ago, but it all began from a mid-night 10 years ago, when I was feeling paralyzed after thousands of ordinary days of lifetime. I inadvertently grabbed a piece of paper and a pencil nearby at the entrance of my house, and suddenly, I felt strongly my hunger for drawing. I drew, I forgot for what I planned to go out. From the moment that, something inside me was linked to my pen. My inside world was translated into images....and that cured me. I drew till my tears overwhelmed my eyes.

In all my series, the images tell the histories about my growth, my gains, my pains, my hopes and my fears. As I always say, "Creation is the way how I talk to myself." I create, then I grow. When I draw, I question. I question back, I answer, I seek, then I break through. And then, my art becomes not only a reflection of the changes in my life, but also the power who changes the life.

What I'm seeking is always a very-honest-dialogue between my heart and my thought. It's so true and so fragile. I appreciate that I've learned how to draw, so that I can meet the true face of my heart and grow up again together with her.

malamegi
INTERIOR DESIGN COMPLEMENTS

Art Director
Massimo Toffolo

Concept
Margherita Jedrzejewska

Edition
MALAMEGI